

Claimant Count and Vacancies, April 2012

16 May 2012

Buckinghamshire's claimant count fell by 270 in April to stand at 6,361, or 2.0 per cent of working age residents. Buckinghamshire continues to have the 4th lowest claimant count rate of England's 27 county council areas and the 3rd lowest rate among the 39 Local Enterprise Partnerships, behind Oxfordshire and Enterprise M3 (both 1.8 and 1.7 per cent respectively). Despite falling for two successive months, the claimant count remains 3.4 per cent above the level recorded in April 2011 and 128 per cent above the level recorded before the recession in 2008, among LEPs, only the West of England has seen a higher rate of growth.

The number of residents out of work for more than six months rose for a fourth successive month to stand at 2,470. The number of 18-24 year olds claiming for over 6 months reached 490, the highest level since November 1996.

Table 1: Claimant Count, April 2012

	No.	%	GB Rank	Annual Change
Aylesbury Vale	2,199	2.0	61 of 380	1.8
Chiltern	957	1.7	37 of 380	2.7
South Bucks	620	1.5	19 of 380	0.6
Wycombe	2,585	2.5	114 of 380	1.1
Buckinghamshire	6,361	2.0	4 of 27	3.4
Hertfordshire	18,281	2.6	6 of 39	2.3
Northamptonshire	16,164	3.6	25 of 39	7.3
Oxfordshire	7,613	1.8	2 of 39	-0.9
SEMLEP	38,115	3.4	21 of 39	6.8
TV Berkshire	13,936	2.4	5 of 39	2.2
London	231,927	4.3	30 of 39	2.5
South East	143,383	2.6	1 of 12	6.4
Great Britain	1,554,548	4.0	-	6.3

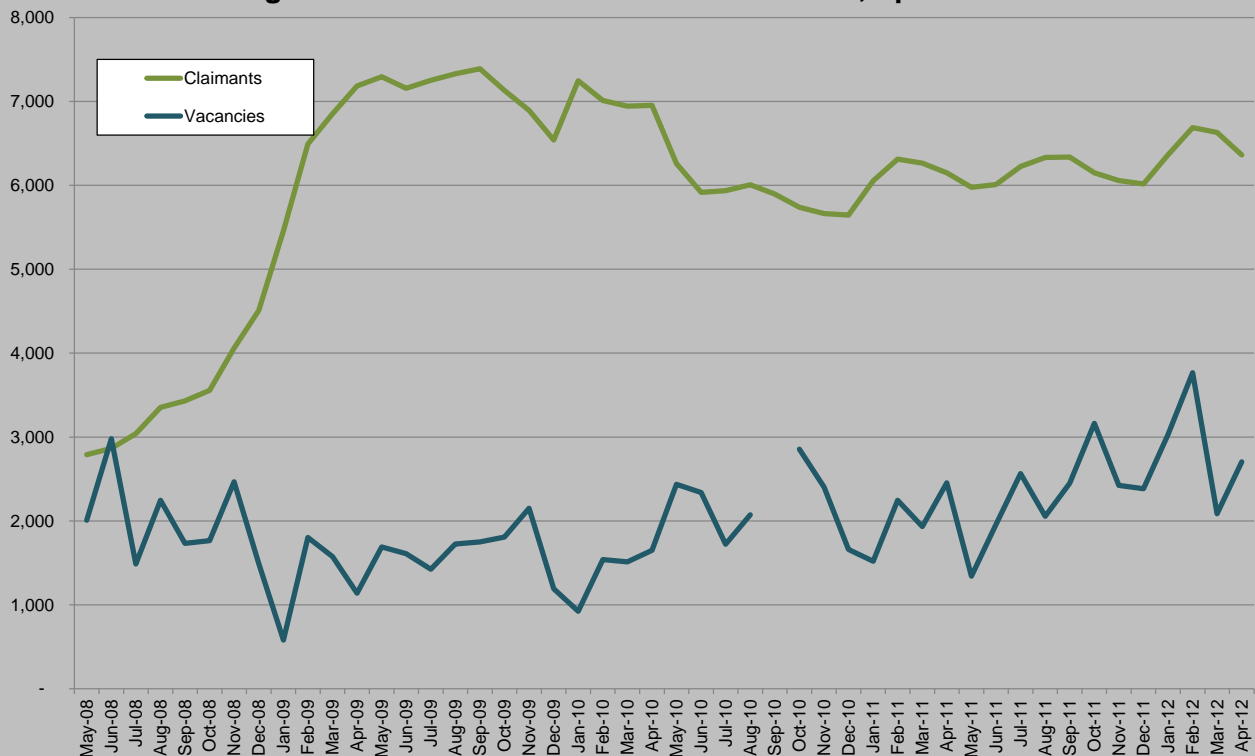
Source: Job Centre Plus, 2012

Claimants aged 18-24 fell by 150 in April to stand at 1,675 or 4.7 per cent of all 18-24 years olds resident in Buckinghamshire. This is the 5th lowest rate among the 27 county council areas and the 39 LEPs, well below the 14.4 per cent recorded across the Black County LEP and the national rate of 7.8 per cent.

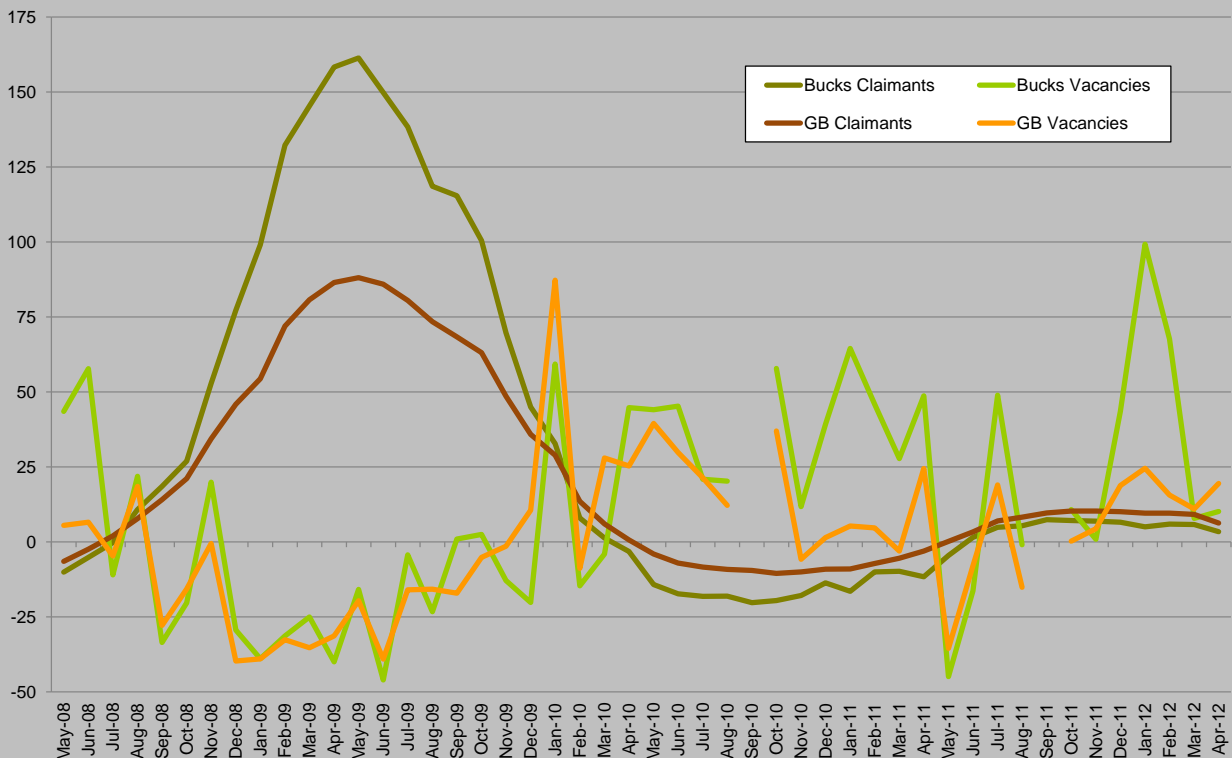
While the proportion of claimants usually employed in managerial, professional and technical occupations fell to a new low of 17.3 per cent in April, the proportion usually employed in sales occupations and elementary occupations rose to 23.7 and 22.7 per cent respectively. Of all claimants, 22.5 per cent are seeking jobs as sales and customer assistants. By age group this ranges from 33.7 per cent of claimants aged 18-24, to 18.5 per cent of claimants aged 25-49 and 17.1 per cent of claimants aged fifty or over. This rises to 39.0 per cent for 18-24 year olds who have been claiming for over six months.

Of the 102 wards in Buckinghamshire, the ten with the most claimants now account for 31.5 per cent of all claimants, with the top twenty accounting for 50.5 per cent, these are the highest rates since May 2008 and August 2011 respectively. Ten wards have a claimant count rate higher than the country as a whole, led by Micklegate (Wycombe) and Southcourt (Aylesbury) at 5.7 per cent, ahead of Oakridge and Castlefield (Wycombe, 5.6); Vale (Chiltern, 4.7) and Disraeli (Wycombe, 4.4).

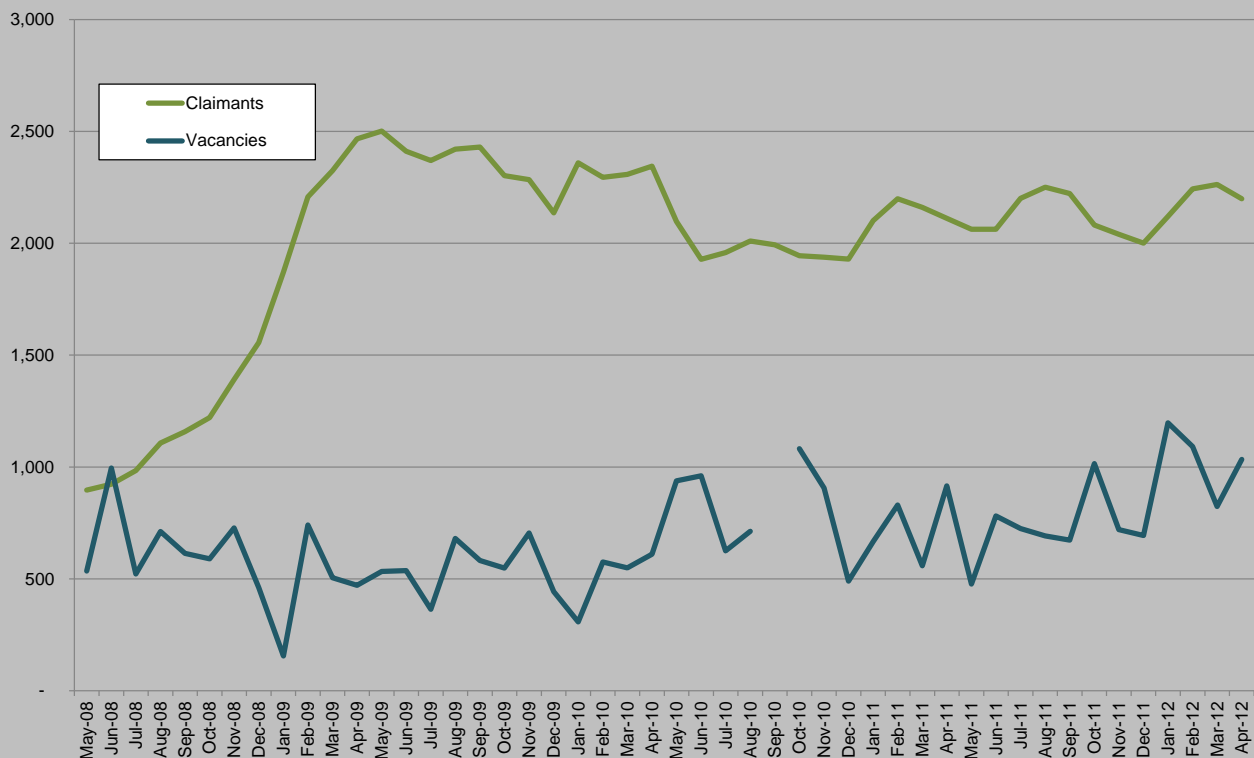
Buckinghamshire Claimant Count and Vacancies, April 2012



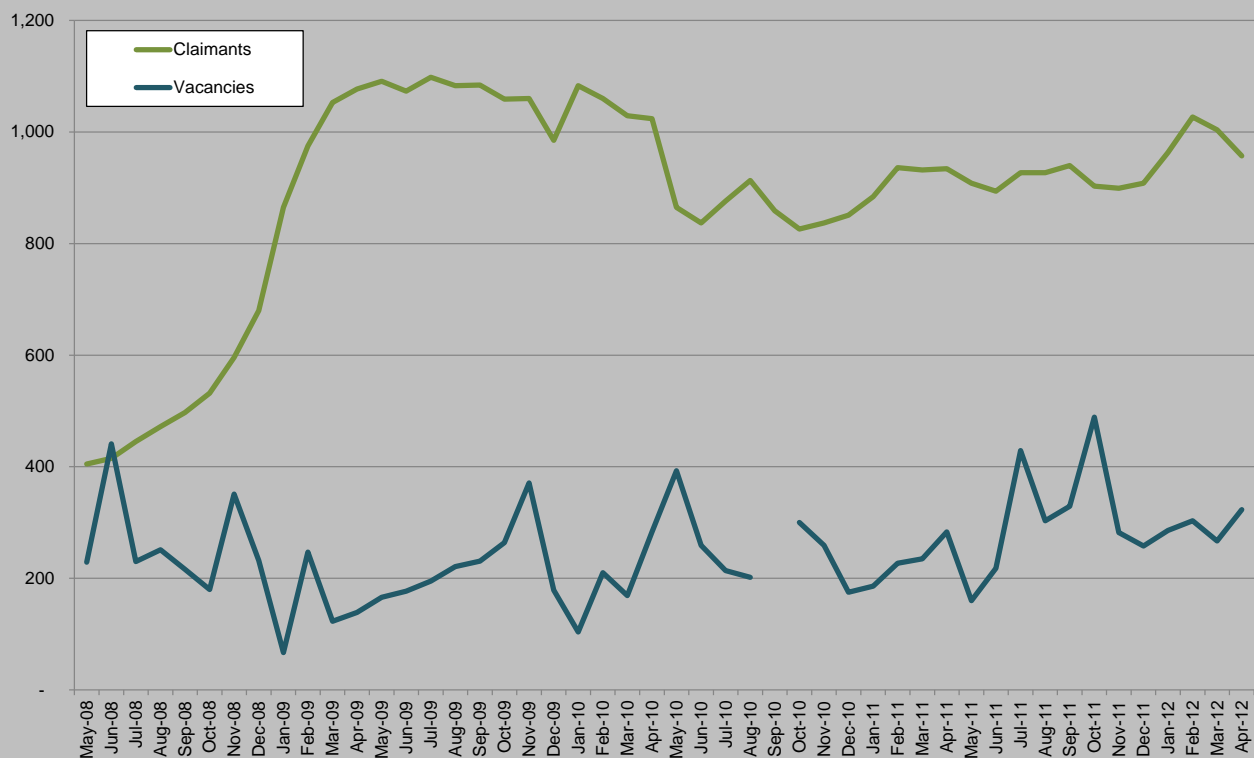
Annual Change in Claimant Count and Vacancies (%)



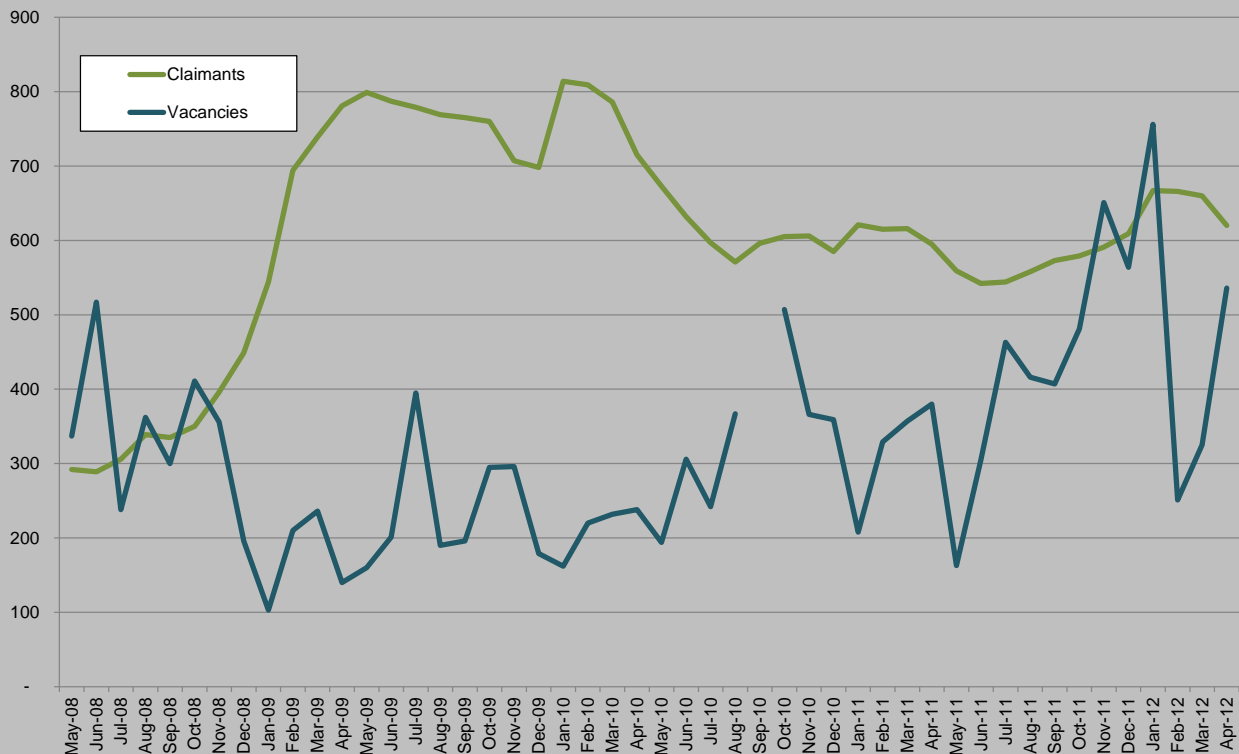
Aylesbury Vale Claimant Count and Vacancies, April 2012



Chiltern Claimant Count and Vacancies, April 2012



South Bucks Claimant Count and Vacancies, April 2012



Wycombe Claimant Count and Vacancies, April 2012

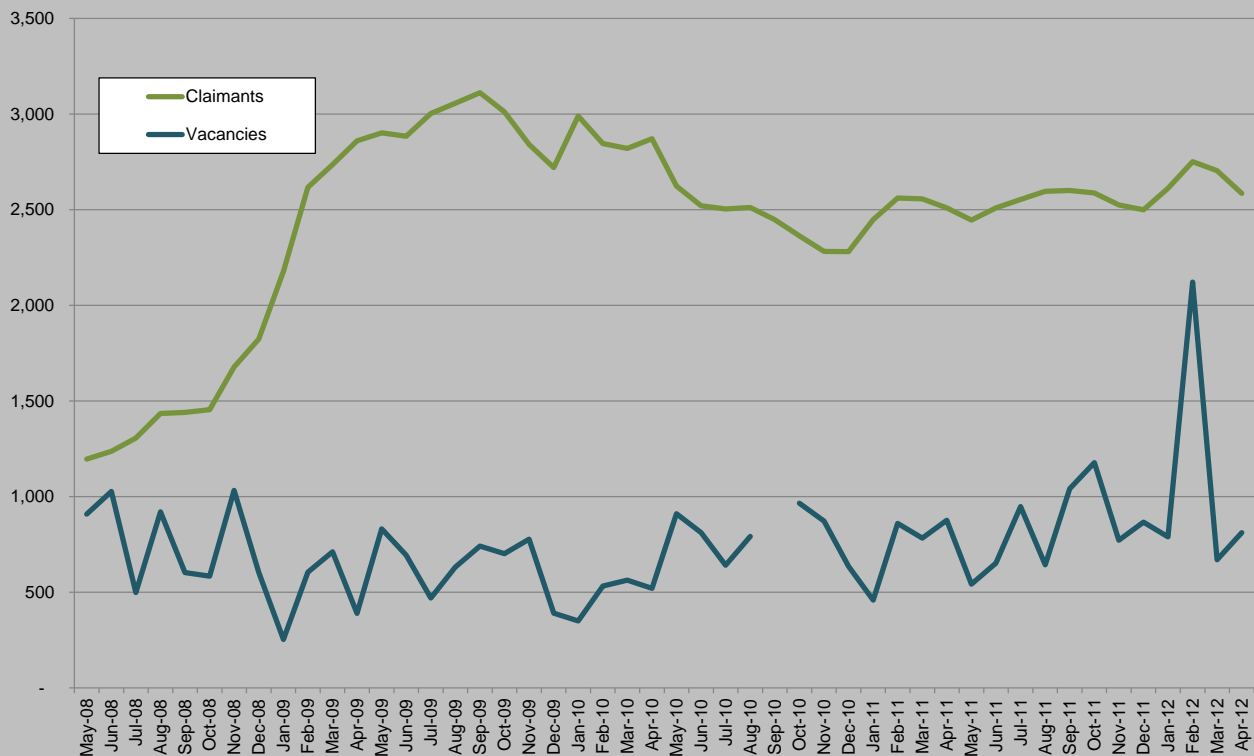


Table 2: Vacancies Notified to Job Centres, April, 2012

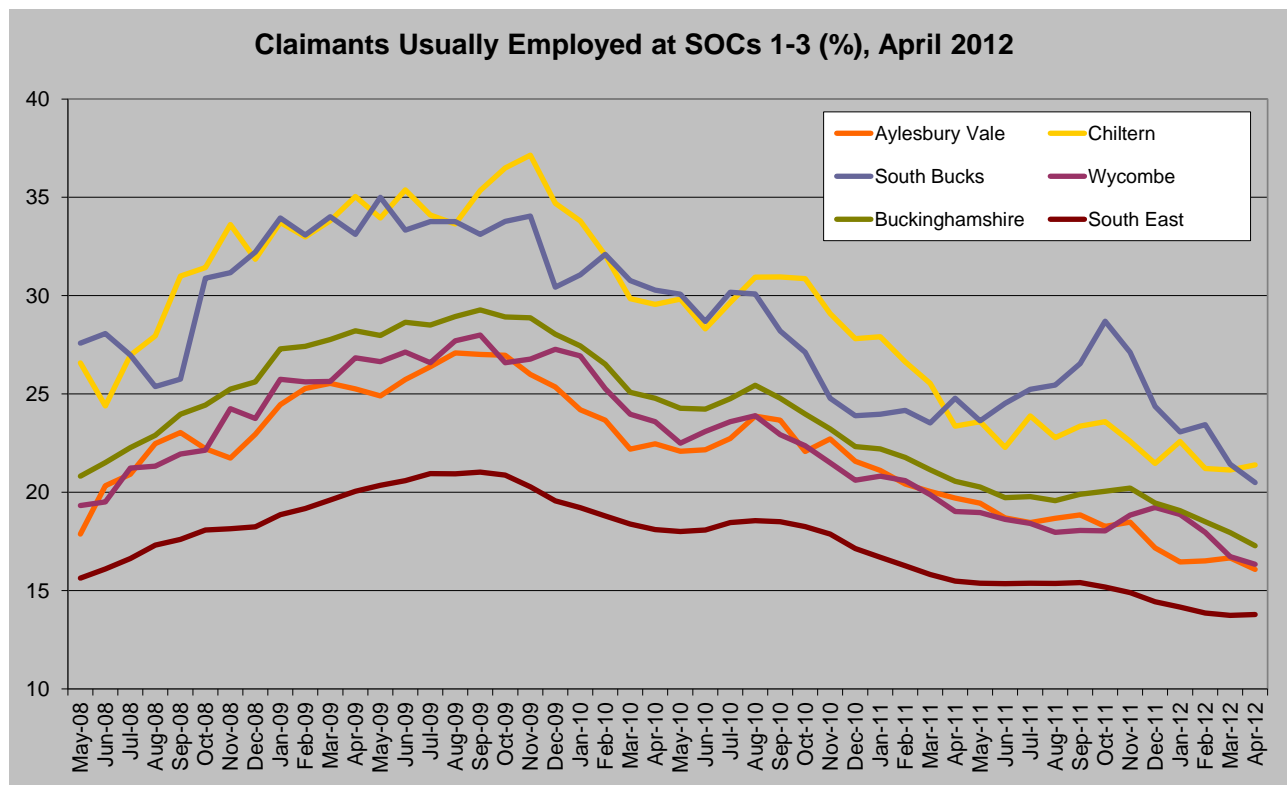
	Notified Vacancies	Annual Change	Vacancy Ratio, April 2011	Vacancy Ratio, April 2012
Aylesbury Vale	1,034	47.4	2.3	2.1
Chiltern	323	13.6	3.3	3.0
South Bucks	536	-9.0	1.6	1.2
Wycombe	812	-14.4	2.9	3.2
Buckinghamshire	2,705	7.9	2.5	2.4
South East	57,147	20.7	3.1	2.5
Great Britain	443,043	11.0	3.9	3.5

Source: Job Centre Plus, 2012

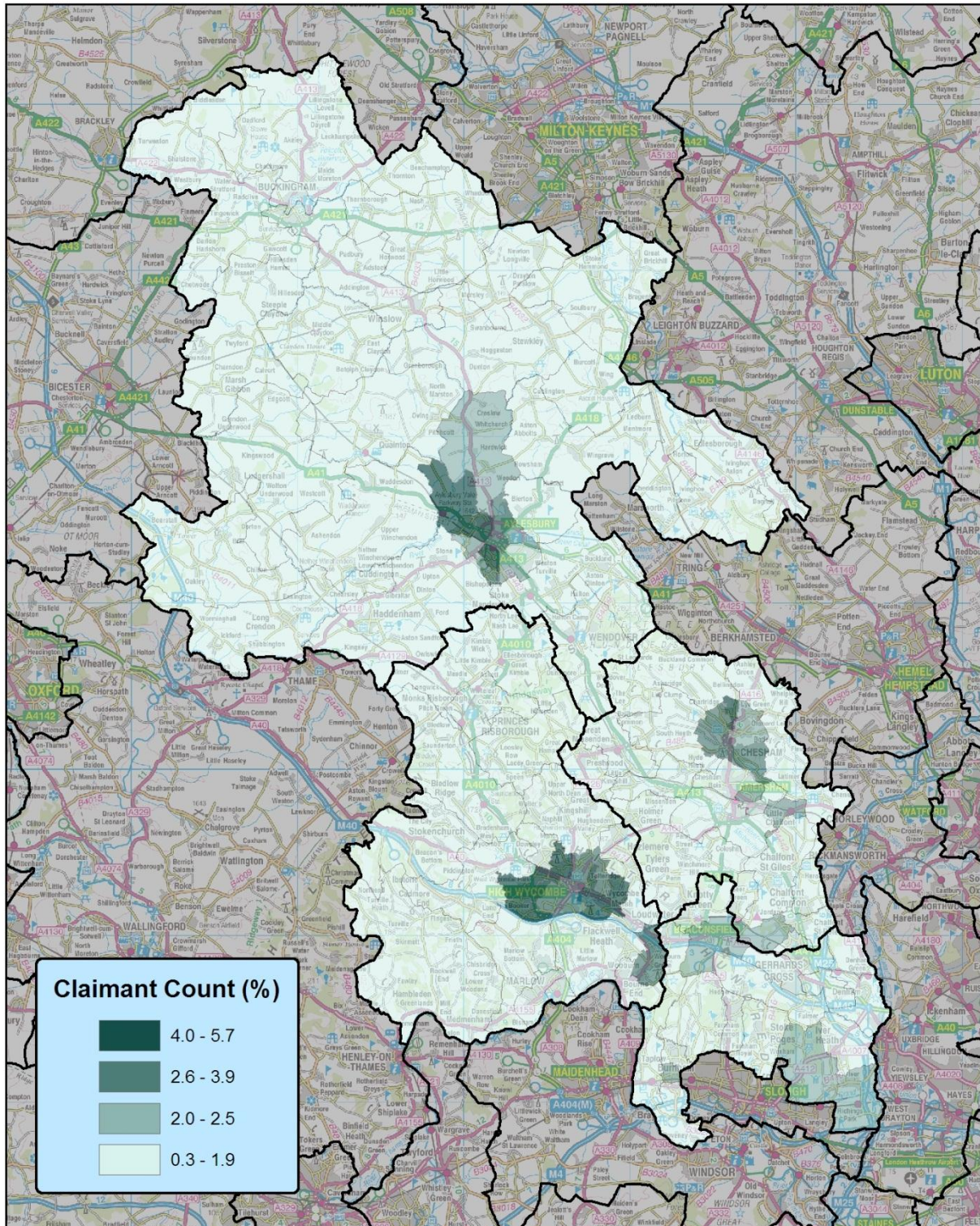
Table 3: Claimants Usually Employed at SOC's 1-3, April 2012

	SOC's 1-3	%	Rank
Aylesbury Vale	345	16.1	78
Chiltern	200	21.4	24
South Bucks	125	20.5	28
Wycombe	415	16.3	75
Buckinghamshire	1,075	17.3	3
South East	19,250	13.8	2
Great Britain	170,670	11.2	

Source: Job Centre Plus, 2012



Source: Job Centre Plus, 2012



**Buckinghamshire Claimant Count Rate by Ward
April 2012**

This map is reproduced from Ordnance Survey material with the permission of Ordnance Survey on behalf of the controller of Her Majesty's Stationary Office. Crown Copyright. Unauthorised reproduction in this map is prohibited and may lead to prosecution or civil proceedings.
© Copyright Buckinghamshire County Council Licence No. 100021529 2010
Imagery © GeoPerspectives.com



Produced by BBF
16 May 2012

Scale: 1:300,000 at A4

