

Claimant Count and Vacancies, July 2012

15 August 2012

Buckinghamshire's claimant count fell by six in July to stand at 6,112, or 2.0 per cent of working age residents. Despite recording a year-on-year fall for the first time since May 2011, Buckinghamshire's claimant count remains more than double pre-recession levels. Buckinghamshire continues to have the fourth lowest claimant count rate among county council areas and the third lowest among Local Enterprise Partnerships.

Despite having risen 3.3 per cent over the last year, a fall in July means South Bucks now has the fifth lowest claimant count rate in Great Britain at 1.3 per cent, behind only the Isles of Scilly, Hart (Hampshire), City of London and West Dorset. By Parliamentary Constituency, Buckingham's claimant count rate of 1.3 per cent is the 8th lowest of all 650, ahead of Beaconsfield (1.4, 16th), Chesham and Amersham (1.6, 47th), Aylesbury (2.2, 124th) and Wycombe (3.0, 243rd).

Table 1: Claimant Count, July 2012

	No.	%	GB Rank	Annual Change
Aylesbury Vale	2,121	1.9	63 of 380	-3.6
Chiltern	929	1.7	42 of 380	0.2
South Bucks	562	1.3	5 of 380	3.3
Wycombe	2,500	2.4	115 of 380	-2.1
Buckinghamshire	6,112	2.0	4 of 27	-1.8
Enterprise M3	16,873	1.6	1 of 39	-4.2
Hertfordshire	17,576	2.5	6 of 39	-3.1
Northamptonshire	16,251	3.7	25 of 39	10.1
Oxfordshire	6,982	1.6	1 of 39	-11.5
SEMLEP	37,094	3.3	22 of 39	2.7
TV Berkshire	13,400	2.3	5 of 39	-0.7
London	222,127	4.1	29 of 39	-3.4
South East	136,521	2.5	1 of 12	1.9
Great Britain	1,508,910	3.8	-	2.0

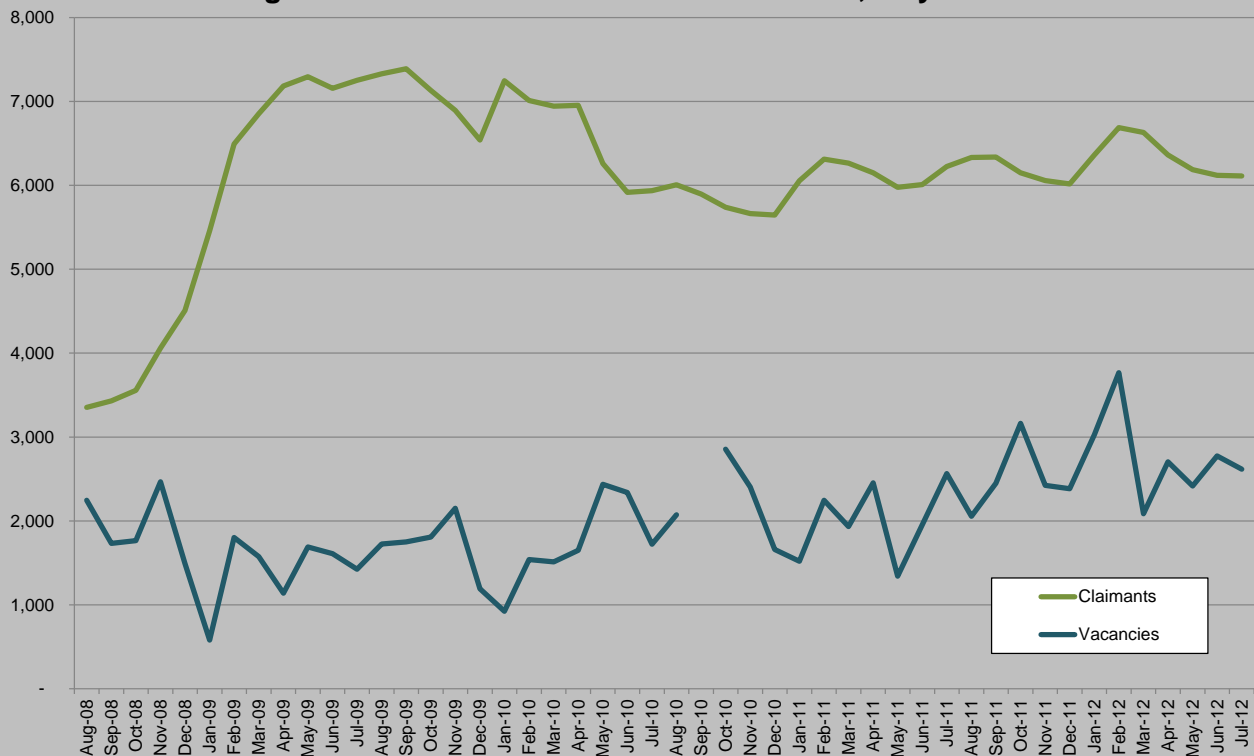
Source: Job Centre Plus, 2012

The number of residents claiming for over 12 months reached its highest level since September 1997 in July at 1,245, with older claimants being more likely to claim for longer. Of all claimants aged over 50, 45.3 per cent had claimed for over a year, compared to 43.2 for those aged 25-49 and 29.7 for 18-24 year olds. By occupation, those looking for work in elementary occupations are most likely to have been claiming for over 12 months, accounting for 29.5 per cent of all long term claimants, ahead of sales occupations (25.4 per cent) and administrative roles (11.5 per cent).

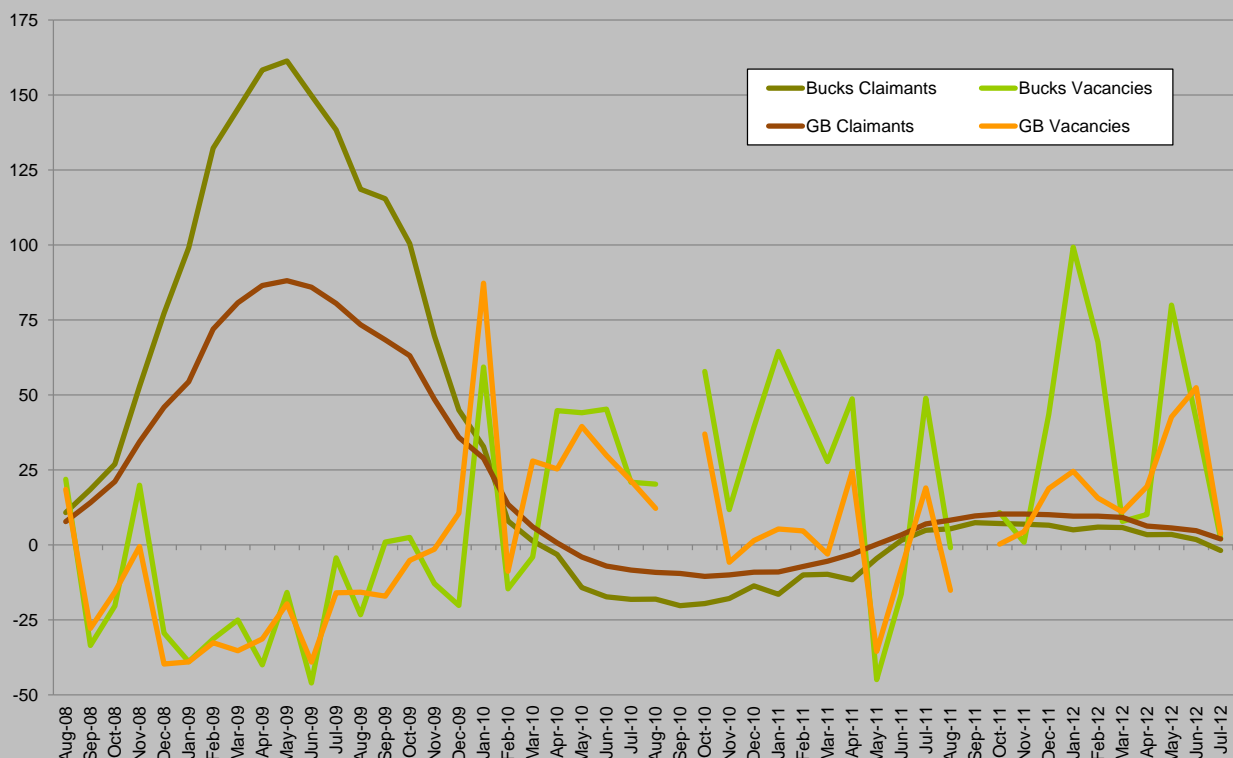
Eight of Buckinghamshire 108 wards have claimant count rates above the national rate. While these wards account for only 8.7 per cent of Buckinghamshire's residents, they account for 22.0 per cent of all claimants and 26.2 per cent of all those claiming for more than 12 months. These wards account for 32.9 per cent all Buckinghamshire claimants looking for work as process, plant and machine operatives, 26.8 per cent of those looking for work in personal service occupations 26.4 per cent of all those looking for work in elementary occupations and 24.2 per cent of those looking for work in sales occupations. For those claiming for over 6 months, looking for work in those occupations, these wards account for 52.6 per cent, 44.4 per cent, 34.0 per cent and 37.5 per cent respectively.

There were 2,618 vacancies in Buckinghamshire notified to Job Centres in July, meaning there were 2.3 claimants for each vacancy, the lowest July vacancy ratio since the start of the recession.

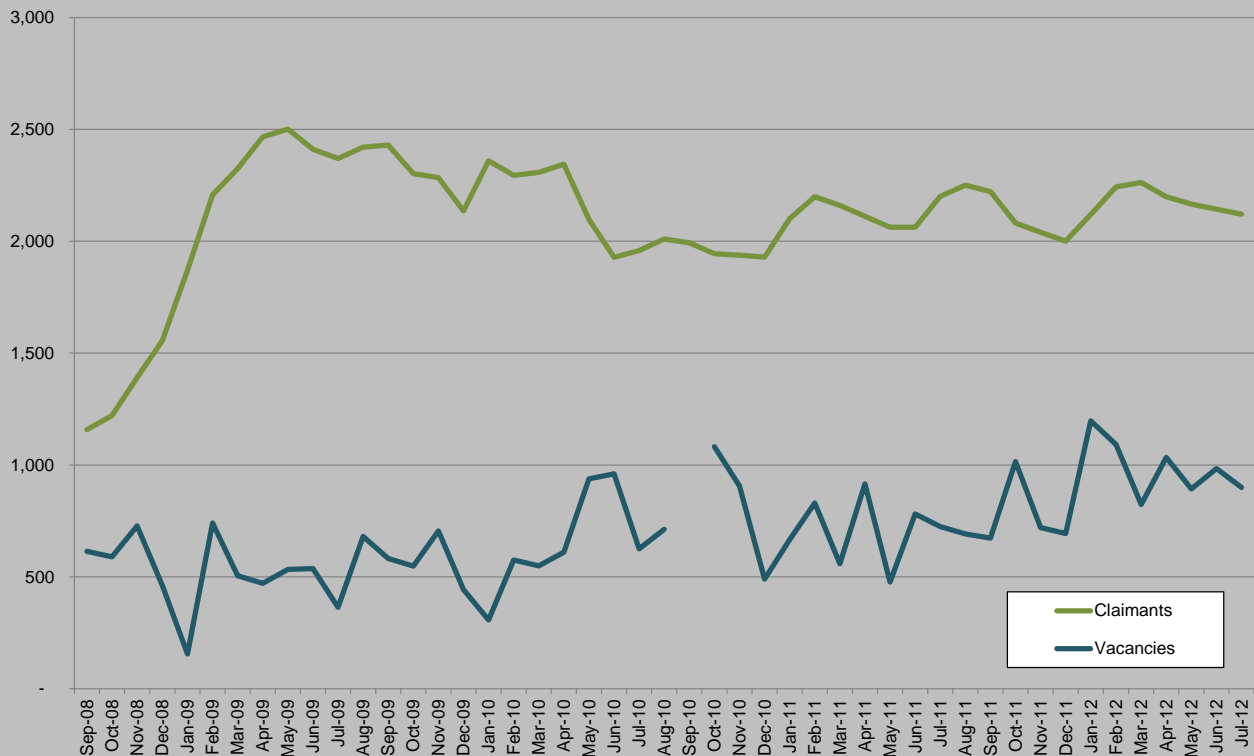
Buckinghamshire Claimant Count and Vacancies, July 2012



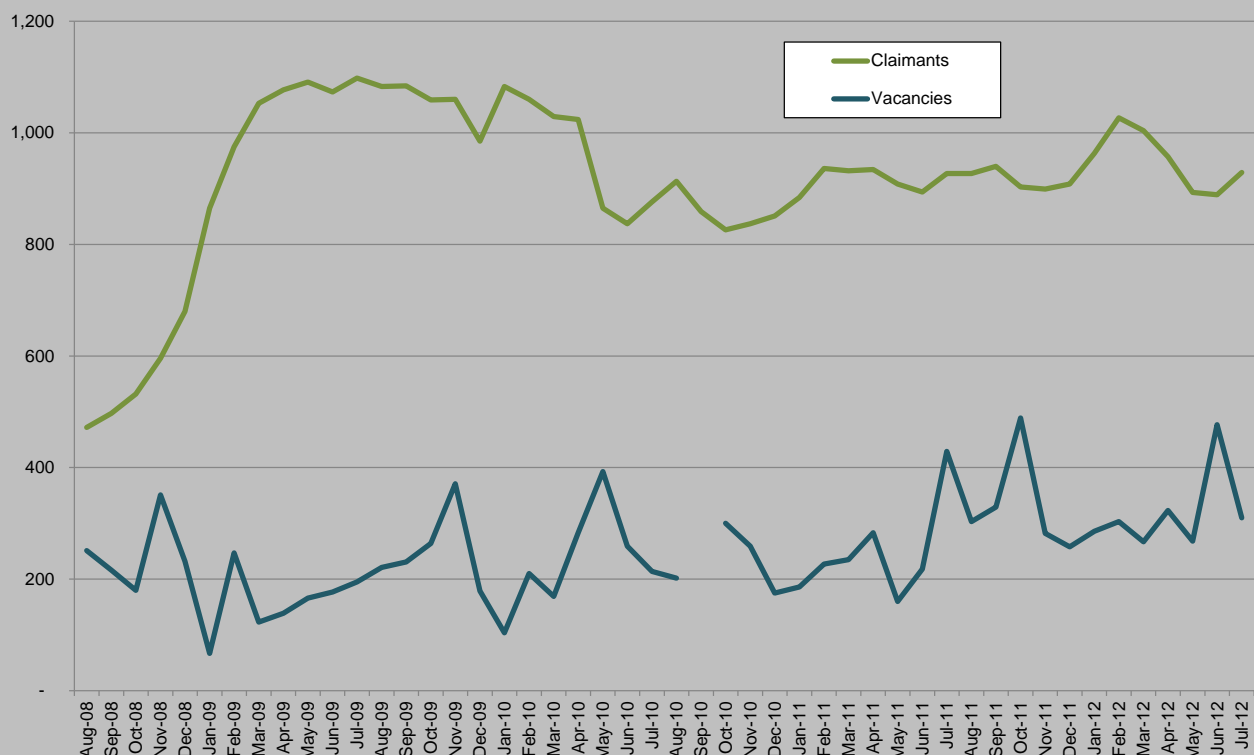
Annual Change in Claimant Count and Vacancies (%)



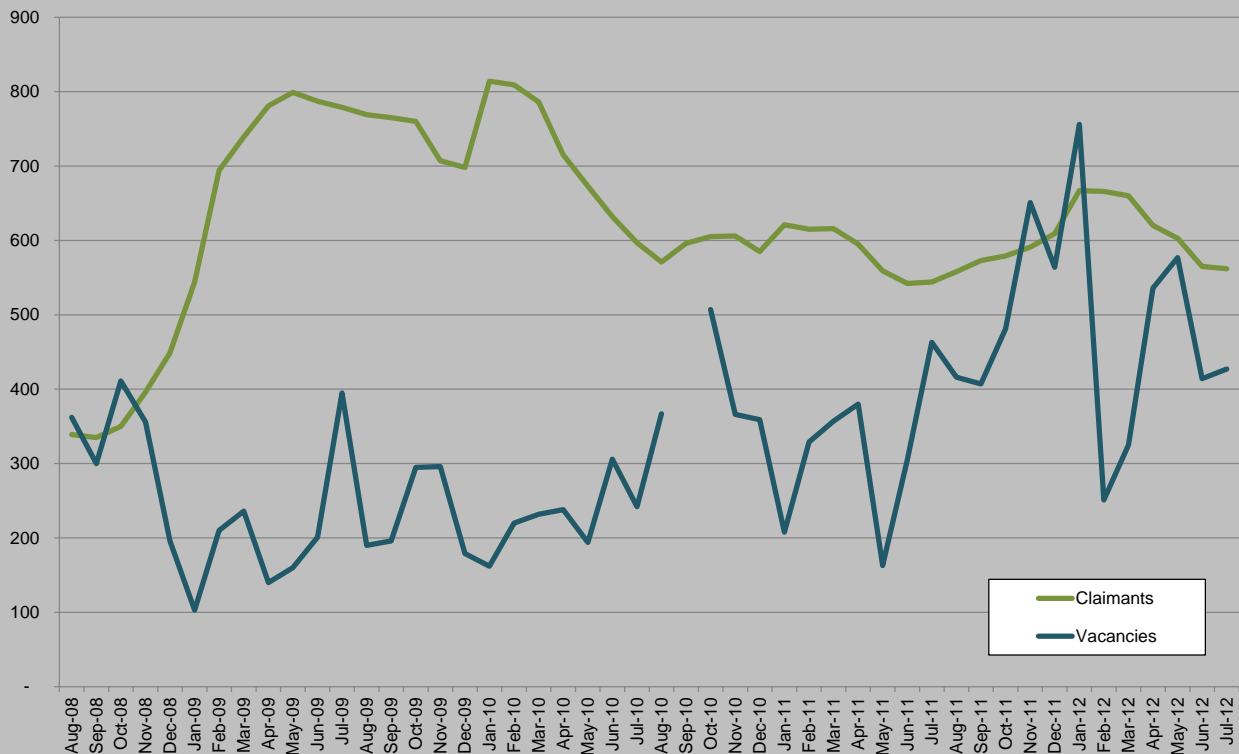
Aylesbury Vale Claimant Count and Vacancies, July 2012



Chiltern Claimant Count and Vacancies, July 2012



South Bucks Claimant Count and Vacancies, July 2012



Wycombe Claimant Count and Vacancies, July 2012

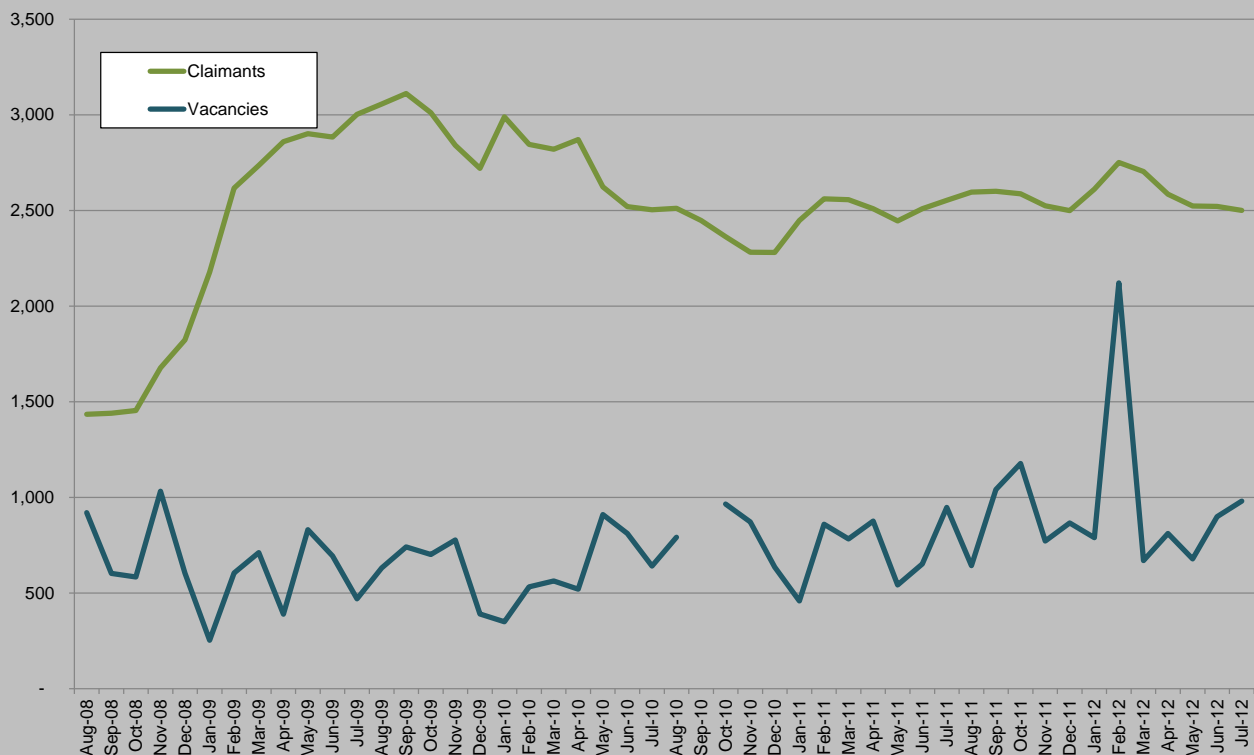


Table 2: Vacancies Notified to Job Centres, July 2012

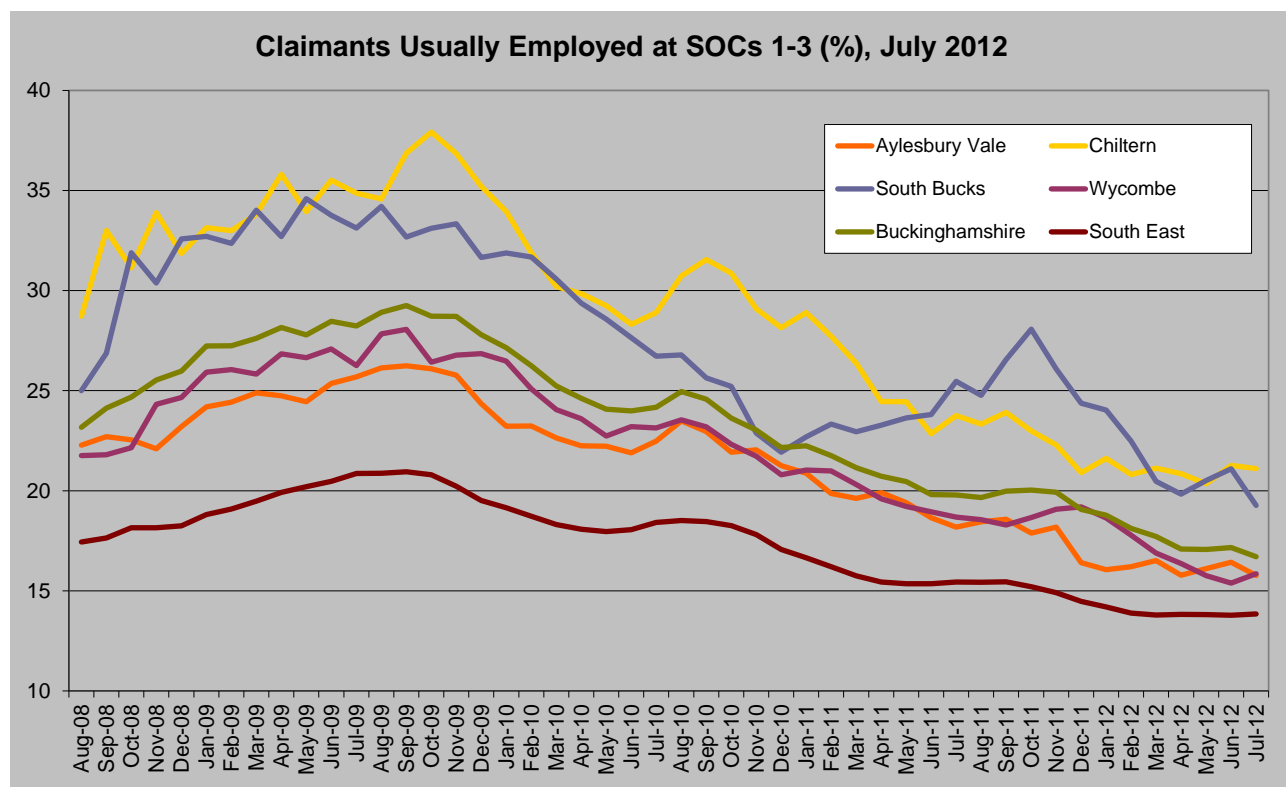
	Notified Vacancies	Annual Change (%)	Vacancy Ratio, July 2011	Vacancy Ratio, July 2012
Aylesbury Vale	900	26.0	3.0	2.4
Chiltern	310	118.8	2.2	3.0
South Bucks	427	35.7	1.2	1.3
Wycombe	981	38.0	2.7	2.5
Buckinghamshire	2,618	41.9	2.4	2.3
South East	50,732	53.4	2.8	2.7
Great Britain	398,893	52.4	3.9	3.8

Source: Job Centre Plus, 2012

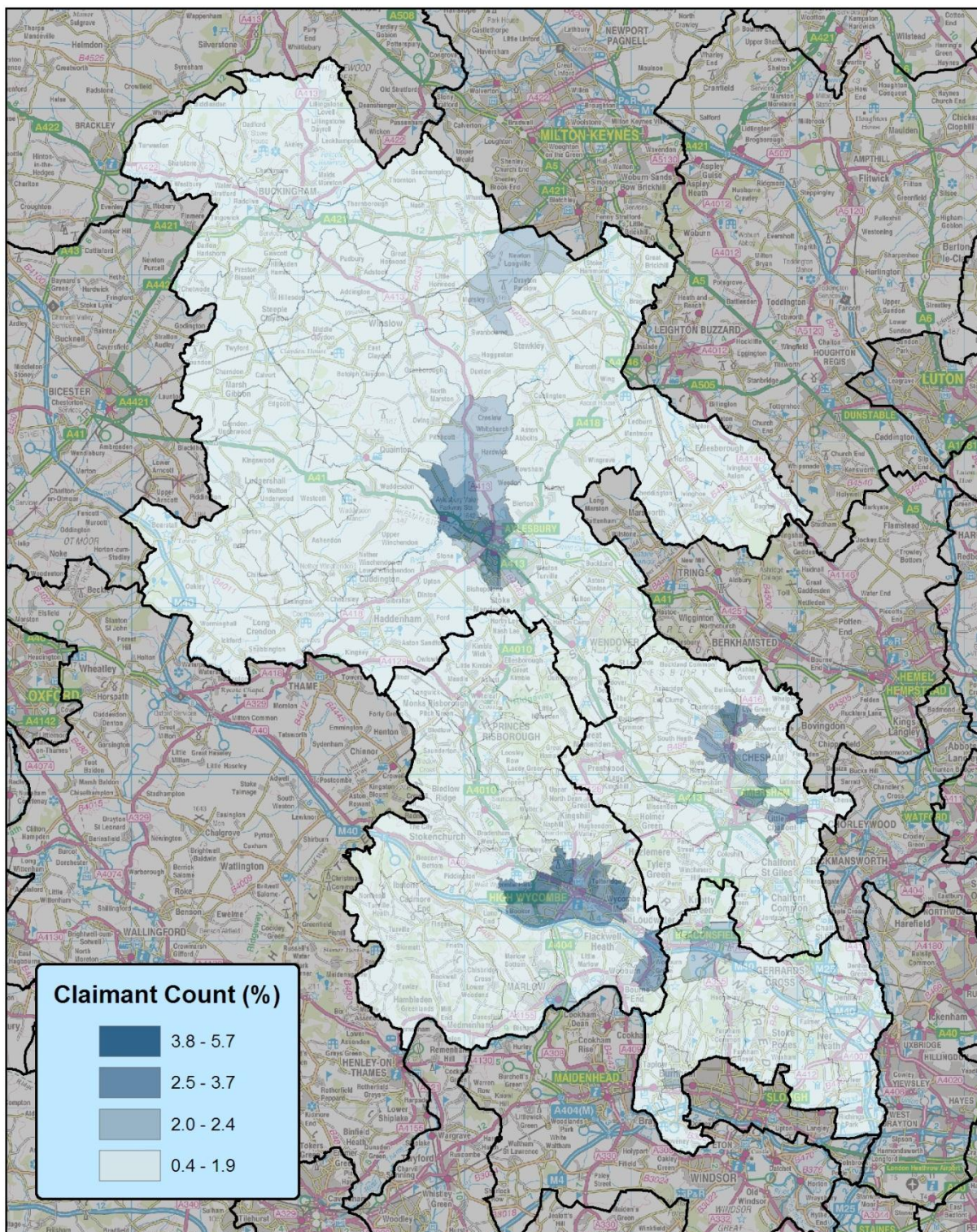
Table 3: Claimants Usually Employed at SOC's 1-3, July 2012

	SOCs 1-3	%	Rank
Aylesbury Vale	325	15.8	89
Chiltern	190	21.1	19
South Bucks	105	19.3	31
Wycombe	390	15.9	86
Buckinghamshire	995	16.7	3
South East	18,335	13.8	2
Great Britain	165,090	11.2	

Source: Job Centre Plus, 2012



Source: Job Centre Plus, 2012



**Buckinghamshire Claimant Count Rate by Ward
July 2012**

This map is reproduced from Ordnance Survey material with the permission of Ordnance Survey on behalf of the controller of Her Majesty's Stationary Office. Crown Copyright. Unauthorised reproduction in this map is prohibited and may lead to prosecution or civil proceedings.
© Copyright Buckinghamshire County Council Licence No. 100021529 2010
Imagery © GeoPerspectives.com



Produced by BBF
15 August 2012

Scale: 1:300,000 at A4

