

Claimant Count and Vacancies, September 2012

17 October 2012

Buckinghamshire's claimant count fell by 64 in September to stand at 6,138, or 2.0 per cent of working age residents. Over the last year, Buckinghamshire's claimant count has fallen 3.1 per cent and is now 16.9 per cent below September 2009's peak of 7,390. This fall is entirely accounted for by a decrease of 1,282 (24.8 per cent) in male claimants, in contrast the number of female claimants has increased by 20 (0.9 per cent) to 2,291. Women now account for 37.3 per cent of all claimants in Buckinghamshire, the highest proportion since October 1988.

The claimant count fell for Aylesbury Vale and Wycombe districts but rose in Chiltern and South Bucks. By Parliamentary constituency, there were falls in Aylesbury, Buckingham and Wycombe but increases in Beaconsfield and Chesham and Amersham.

Table 1: Claimant Count, September 2012

	No.	%	GB Rank	Annual Change
Aylesbury Vale	2,114	1.9	67 of 380	-4.9
Chiltern	922	1.7	42 of 380	-1.9
South Bucks	596	1.4	19 of 380	4.0
Wycombe	2,506	2.4	121 of 380	-3.7
Buckinghamshire	6,138	2.0	5 of 27	-3.1
Enterprise M3	16,856	1.6	1 of 39	-7.3
Hertfordshire	17,526	2.5	7 of 39	-5.2
Northamptonshire	15,697	3.5	25 of 39	5.2
Oxfordshire	6,700	1.6	1 of 39	-15.2
SEMLEP	35,998	3.2	21 of 39	-2.5
TV Berkshire	13,256	2.3	5 of 39	-5.2
London	221,704	4.1	30 of 39	-6.7
South East	134,136	2.5	1 of 12	-1.9
Great Britain	1,488,740	3.8	-	-1.6

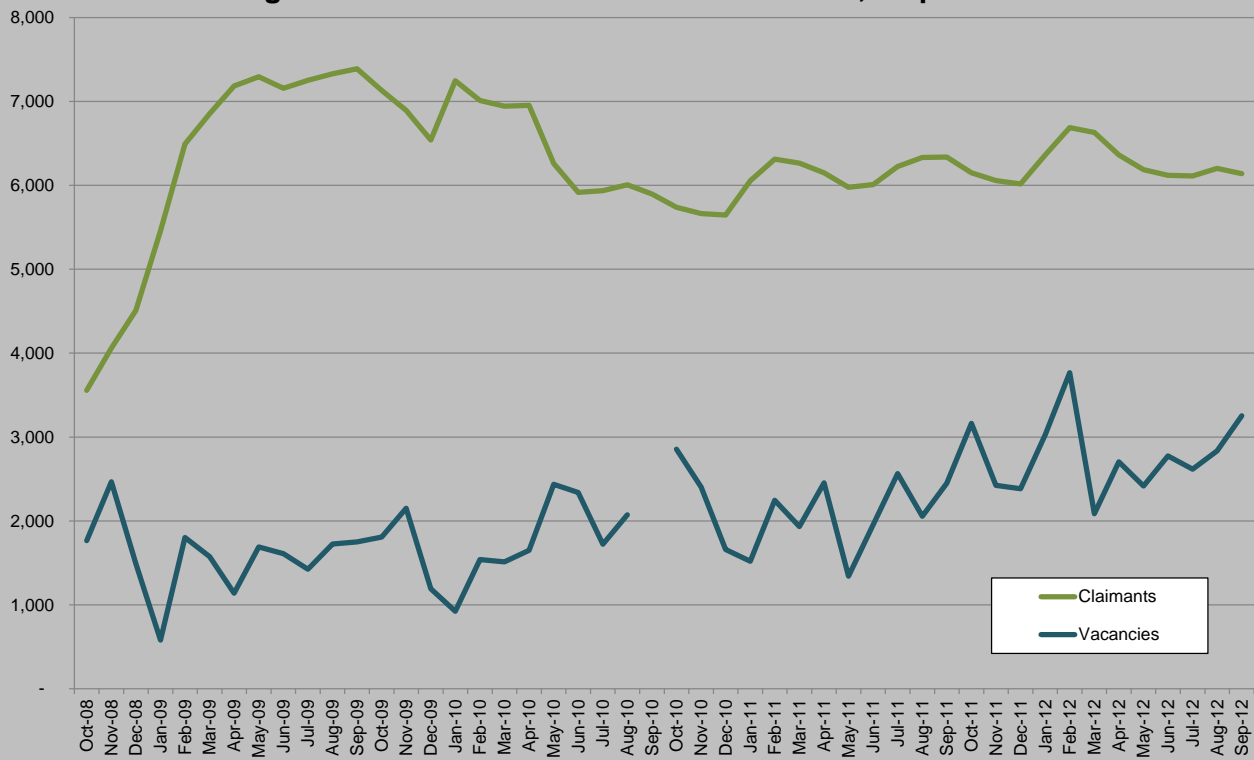
Source: Job Centre Plus, 2012

The number of claimants looking for work in managerial, professional or technical occupations returned to pre-recession levels in September at 955, accounting for a new low of only 16.1 per cent of all claimants. In contrast there are 1,000 more claimants looking for work in sales occupations, an extra 480 for elementary occupations and an extra 310 for administrative occupations. Over half of all female claimants are looking for work in either sales and customer service or administrative occupations.

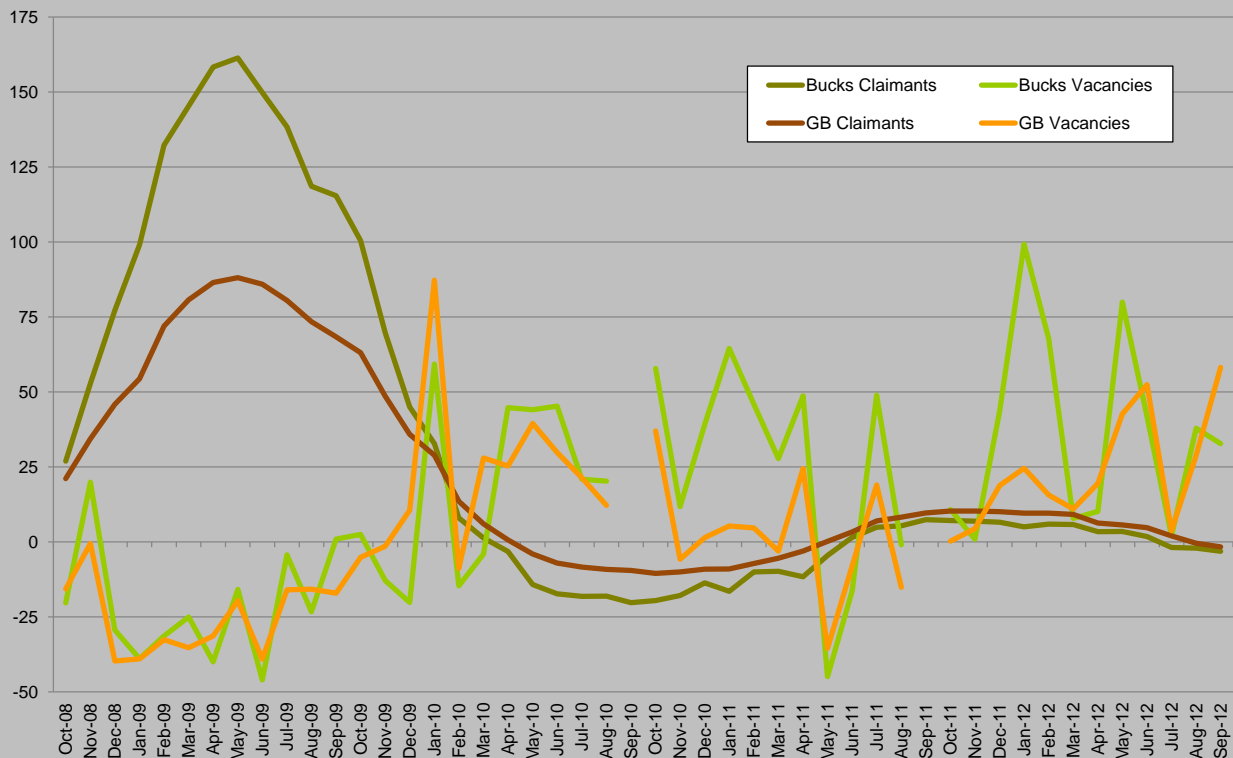
Despite the fall in total claimants, the number of long term claimants (over twelve months) increased for a 15th successive month to 1,325, the highest level since August 1997. Over half of long-term claimants are usually employed in just five of 81 occupations, all of which are at record levels (sales assistants and retail cashiers: 330, elementary goods storage: 105, general administrative occupations: 100, elementary personal service occupations: 85, and elementary cleaning occupations, 75).

There were 3,253 vacancies in Buckinghamshire notified to Job Centres in September, meaning there were 1.9 claimants for each vacancy. The most commonly notified vacancy was for care assistants and home carers (388); gardeners and groundsmen (238); cleaners (200) and building labourers (178), the number of vacancies exceeding the number of claimants looking for work in all these occupations. The most oversubscribed vacancy was for sales and retail assistants, where there were 1,485 claimants for only 91 vacancies (a vacancy ratio of 16.3), ahead of general office assistant (530, 26, 20.4) and goods handling occupations (395, 101, 3.9).

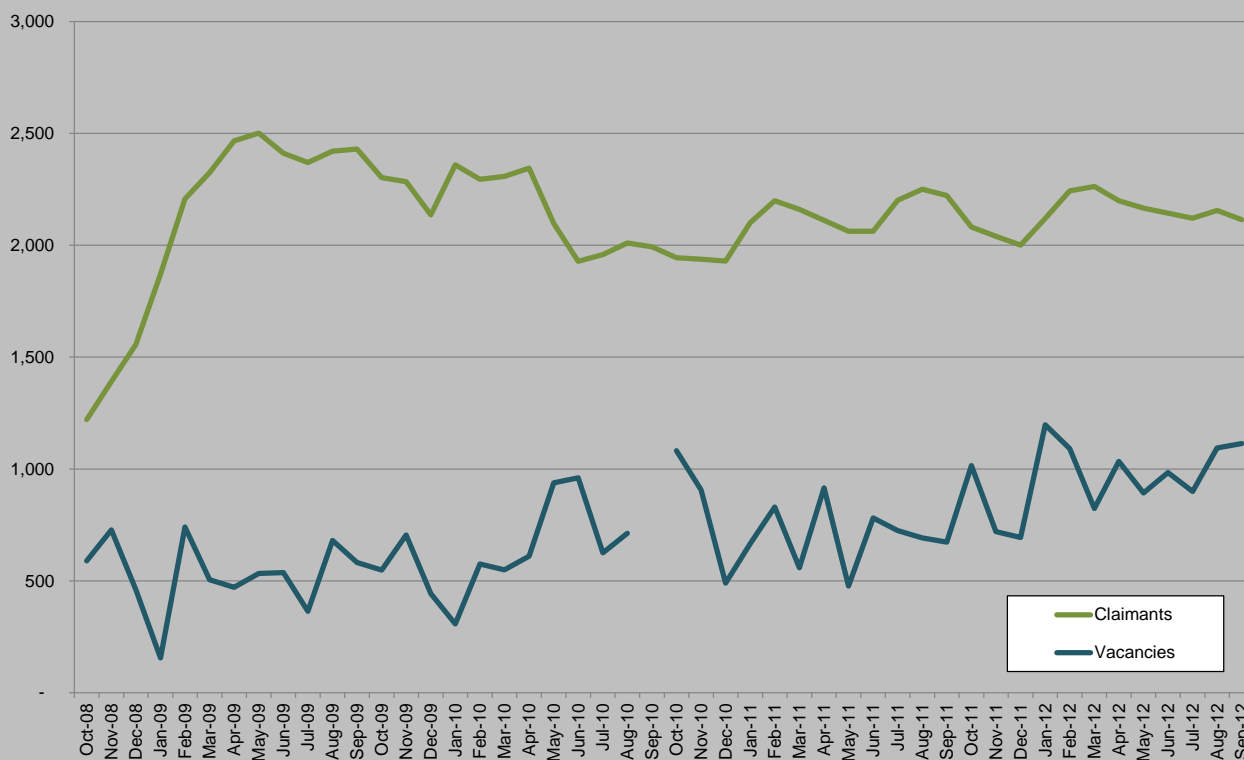
Buckinghamshire Claimant Count and Vacancies, September 2012



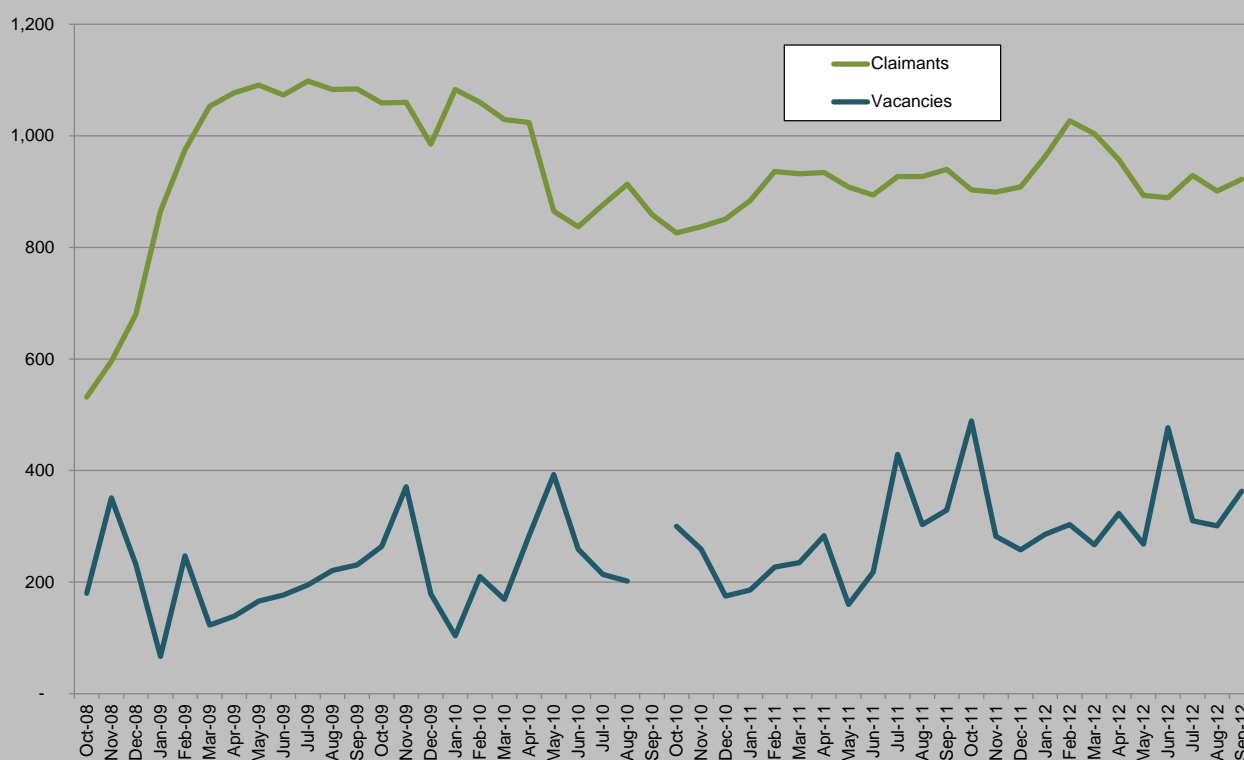
Annual Change in Claimant Count and Vacancies (%)



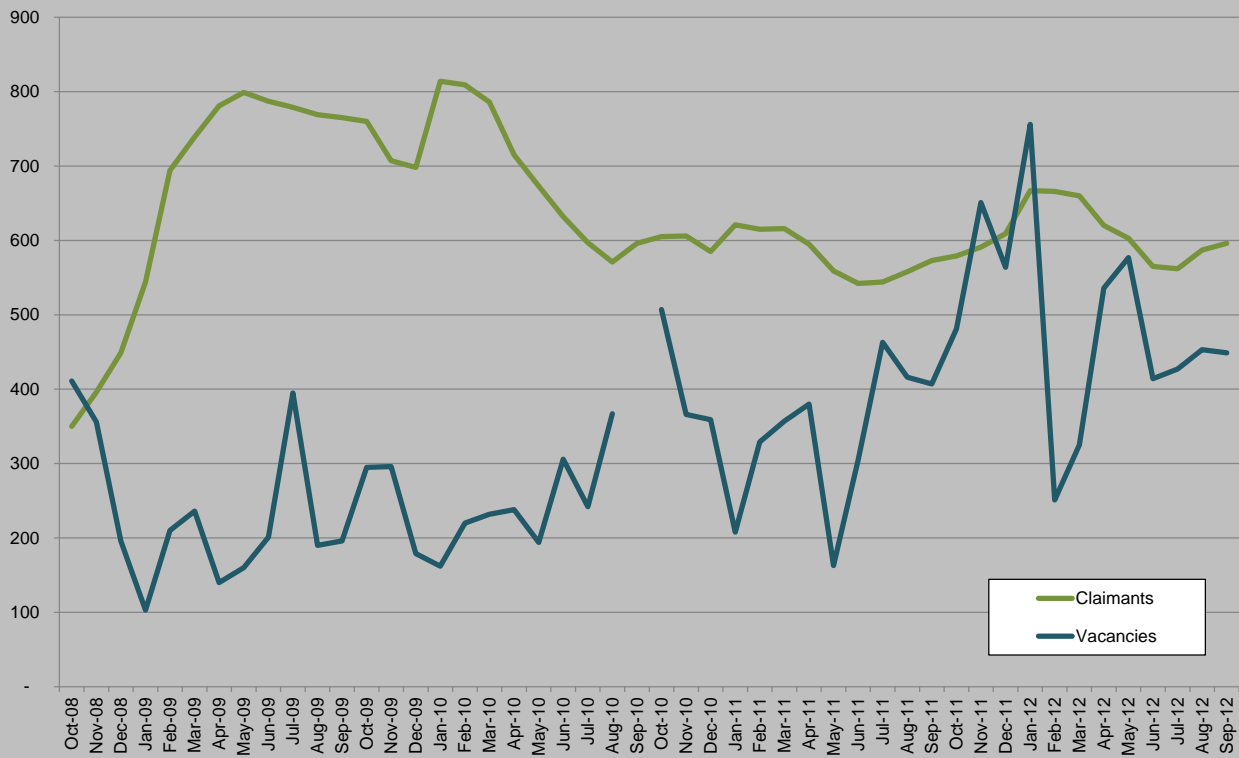
Aylesbury Vale Claimant Count and Vacancies, September 2012



Chiltern Claimant Count and Vacancies, September 2012



South Bucks Claimant Count and Vacancies, September 2012



Wycombe Claimant Count and Vacancies, September 2012

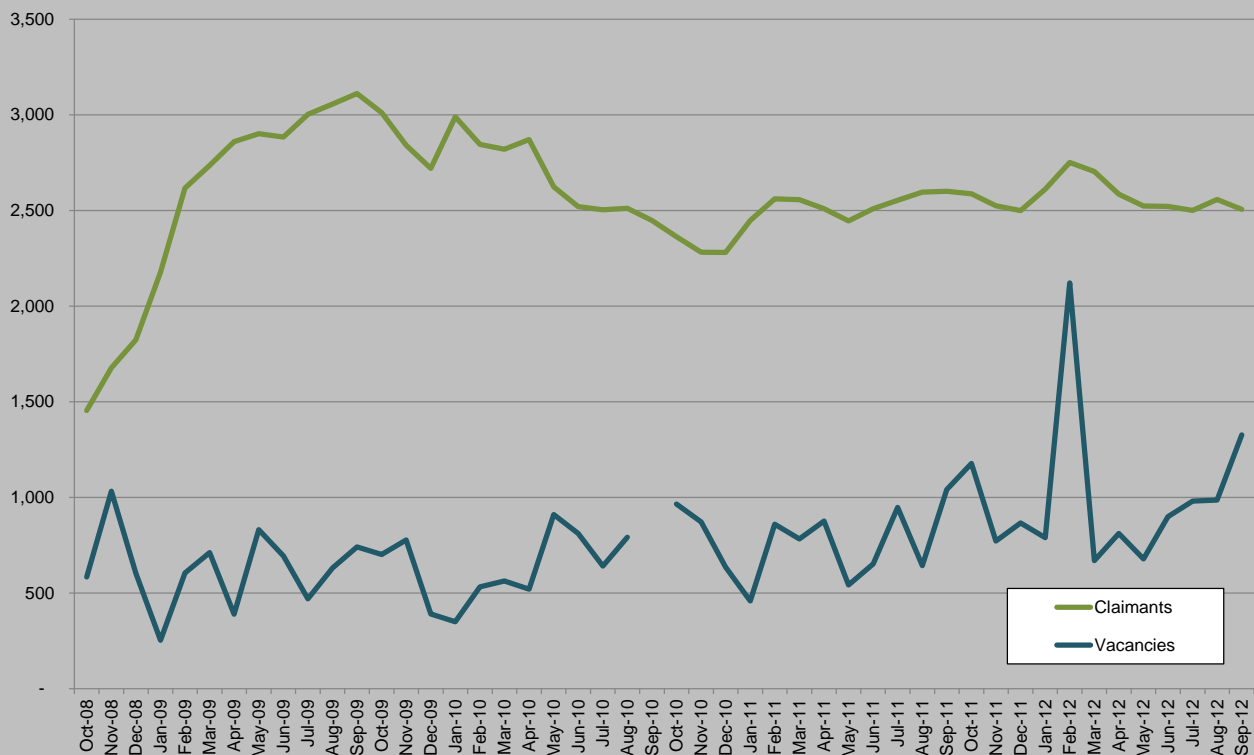


Table 2: Vacancies Notified to Job Centres, September 2012

	Notified Vacancies	Annual Change (%)	Vacancy Ratio, September 2011	Vacancy Ratio, September 2012
Aylesbury Vale	1,114	65.5	3.3	1.9
Chiltern	363	10.3	2.9	2.5
South Bucks	449	10.3	1.4	1.3
Wycombe	1,327	27.5	2.5	1.9
Buckinghamshire	3,253	32.8	2.6	1.9
South East	68,116	56.3	3.2	2.0
Great Britain	547,458	58.2	4.4	2.7

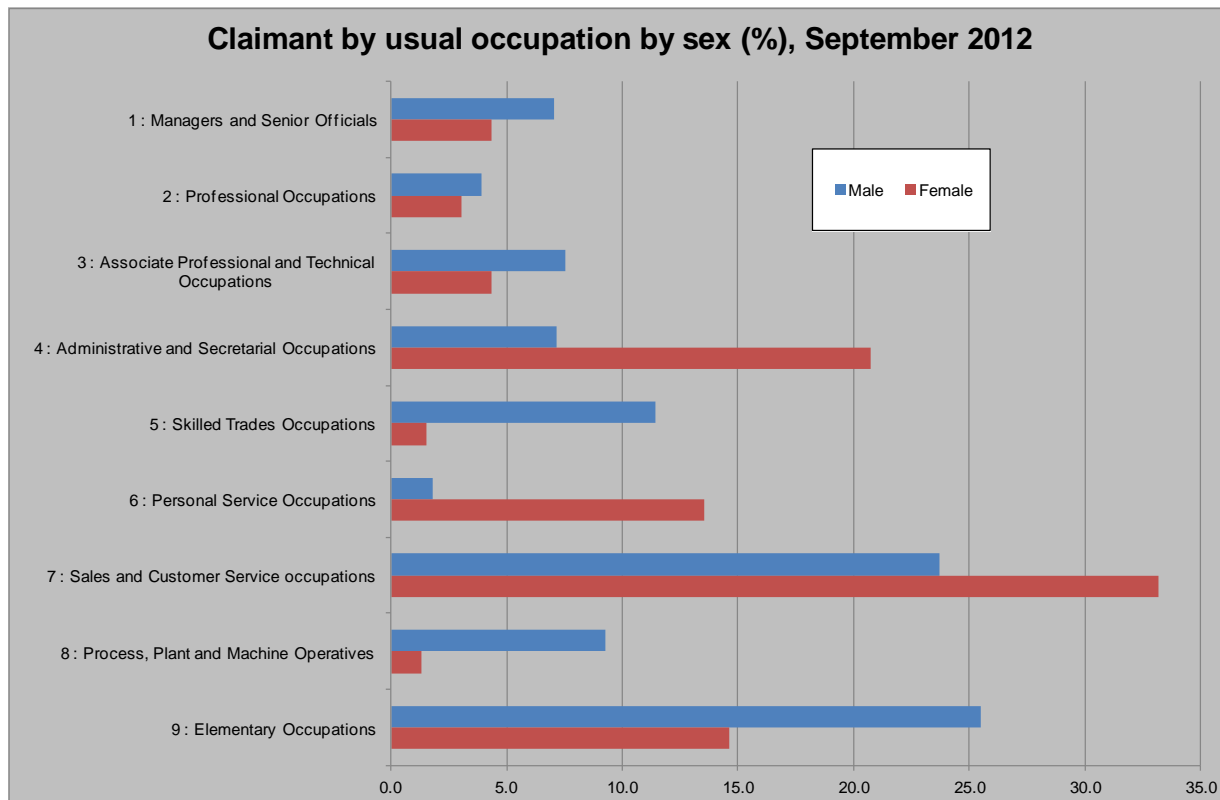
Source: Job Centre Plus, 2012

Table 3: Claimants Usually Employed at SOC's 1-3, September 2012

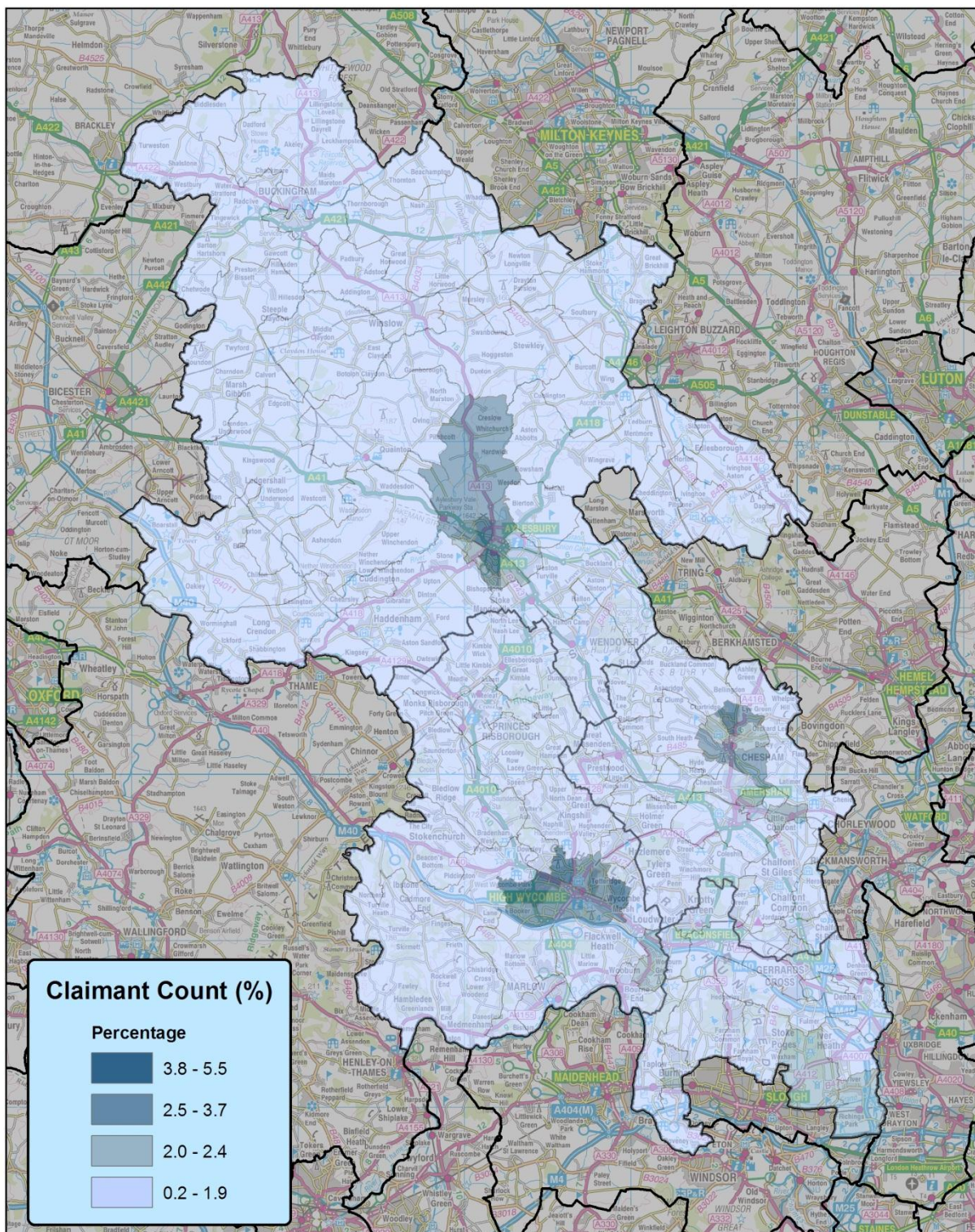
	SOCs 1-3	%	Rank
Aylesbury Vale	300	14.8	113
Chiltern	170	19.2	33
South Bucks	115	20.2	25
Wycombe	375	15.3	98
Buckinghamshire	955	16.1	3
South East	17,910	13.8	2
Great Britain	163,330	11.2	

Source: Job Centre Plus, 2012

Claimant by usual occupation by sex (%), September 2012



Source: Job Centre Plus, 2012



**Buckinghamshire Claimant Count Rate by Ward
September 2012**

This map is reproduced from Ordnance Survey material with the permission of Ordnance Survey on behalf of the controller of Her Majesty's Stationery Office. Crown Copyright. Unauthorised reproduction infringes Crown Copyright and may lead to prosecution or civil proceedings.
© Copyright Buckinghamshire County Council Licence No. 100021529 2010
Imagery © GeoPerspectives.com



Produced by Bucks CC
17 October 2012

Scale: 1:300,000 at A4

